



Hobs Moat, Solihull, West Midlands; Mediaeval moated homstead site, north of Solihull town centre

Location: [Google Map](#); DMS: 52 26 28 N 1 47 10 W; Ordnance SP146825

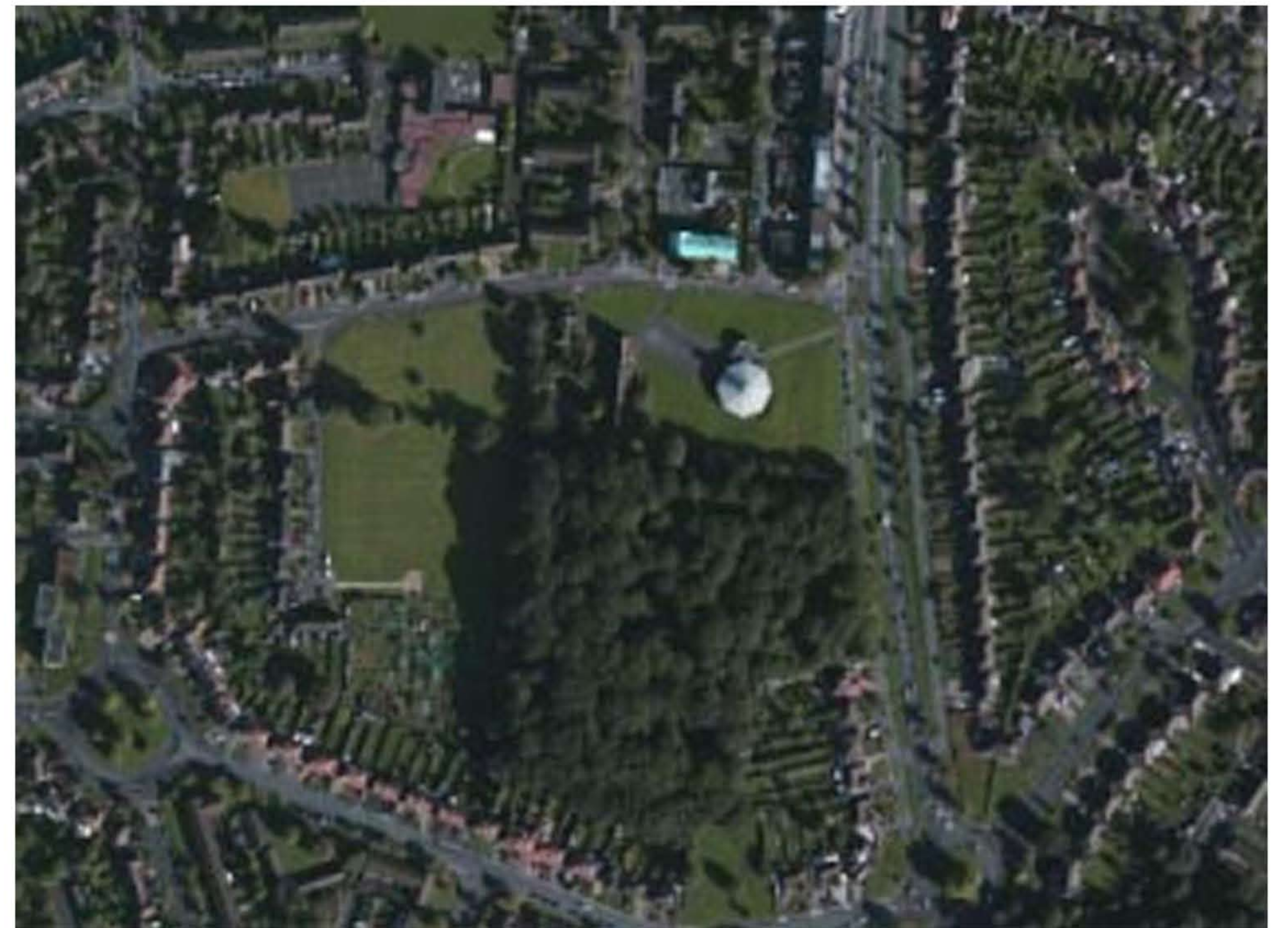
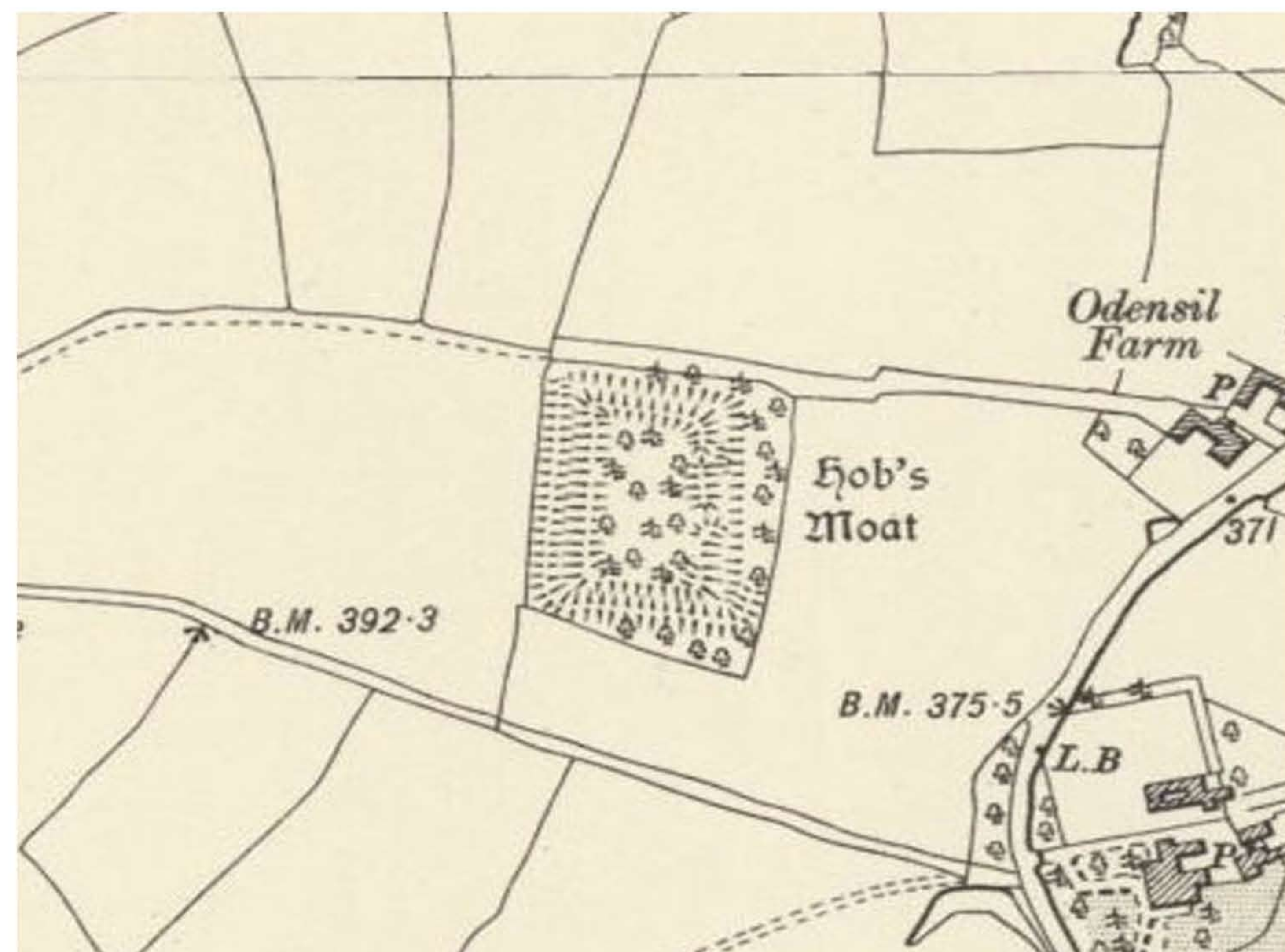
Zoom in ctrl + Zoom out ctrl - 100 % zoom recommended

< 2000 ft 610 m



Drone, 17.3.16. 1200 ft, 366 m

Google Maps, 2017



Ordnance Survey Six Inch (1888 - 1913)

Bing Maps

Print: portrait (up to A0)

<
1560 ft
475 m