



Wall, Staffordshire; site of Roman town Letocetum, south of Lichfield

Location: [Google Map](#); DMS: 52 39 27 N 1 51 23 W; Ordnance SK 098066

Zoom in ctrl + Zoom out ctrl - 100 % zoom recommended

< 2000 ft 610 m

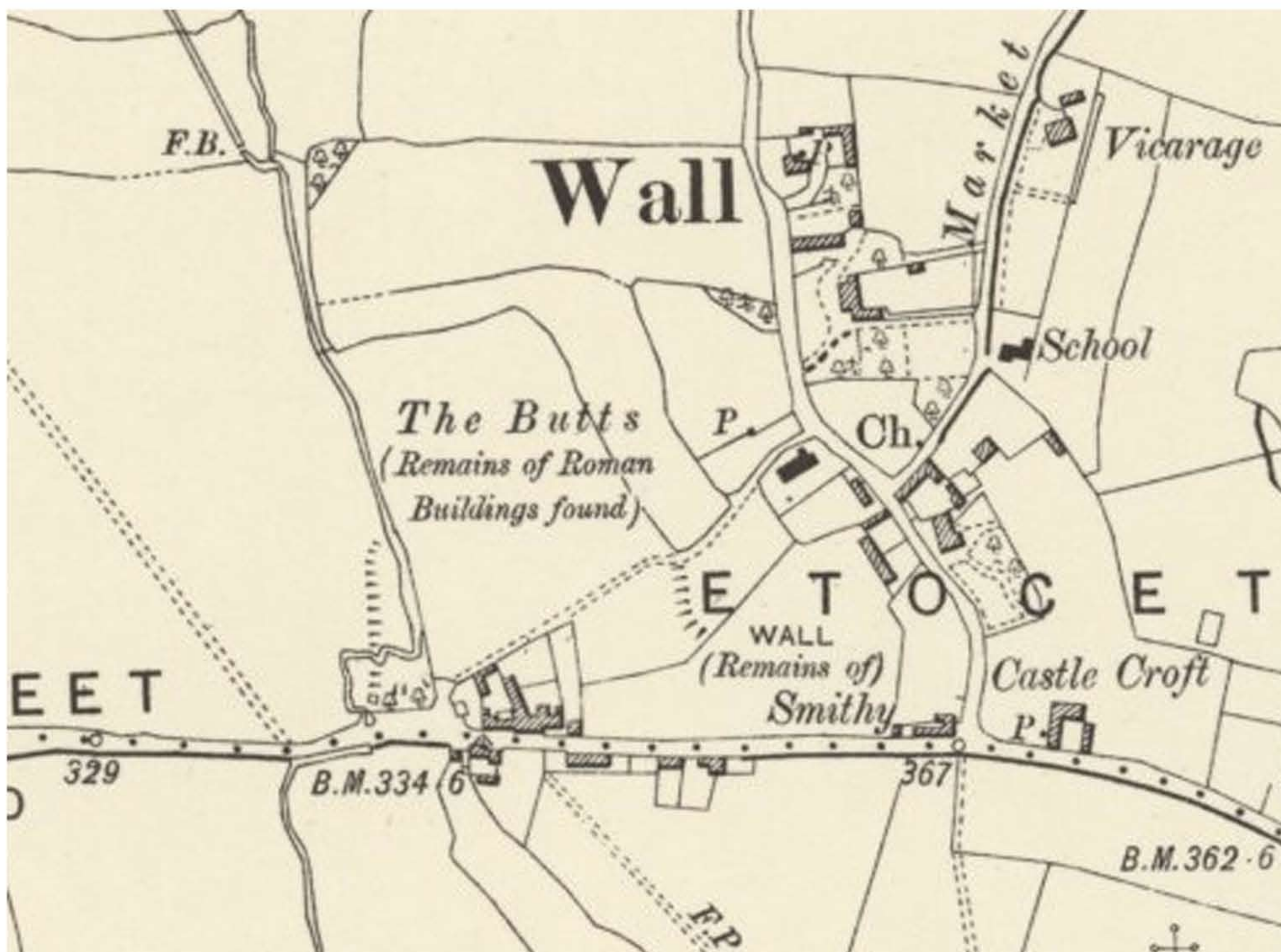
< 1560 ft 475 m



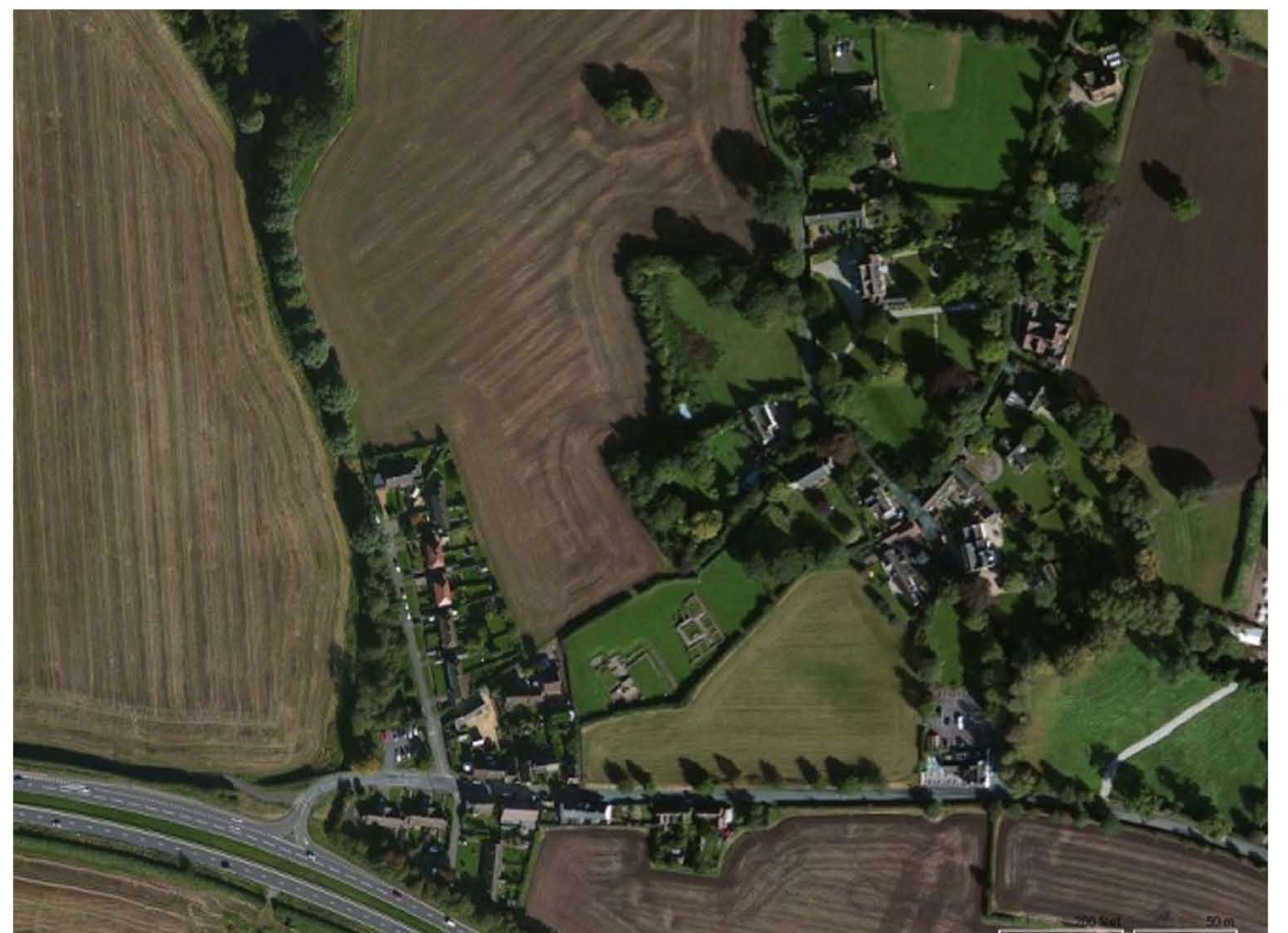
Drone, 14.9.16. 1200 ft, 366 m



Google Maps, 2016



Ordnance Survey Six Inch (1888 - 1913)



Bing Maps

Print: portrait (up to A0)