



Wall, Staffordshire; site of Roman town Letocetum, south of Lichfield

Location: [Google Map](#); DMS: 52 39 27 N 1 51 23 W; Ordnance SK 098066

Zoom in ctrl + Zoom out ctrl - 100 % zoom recommended

< 2000 ft 610 m

<  
1560 ft  
475 m



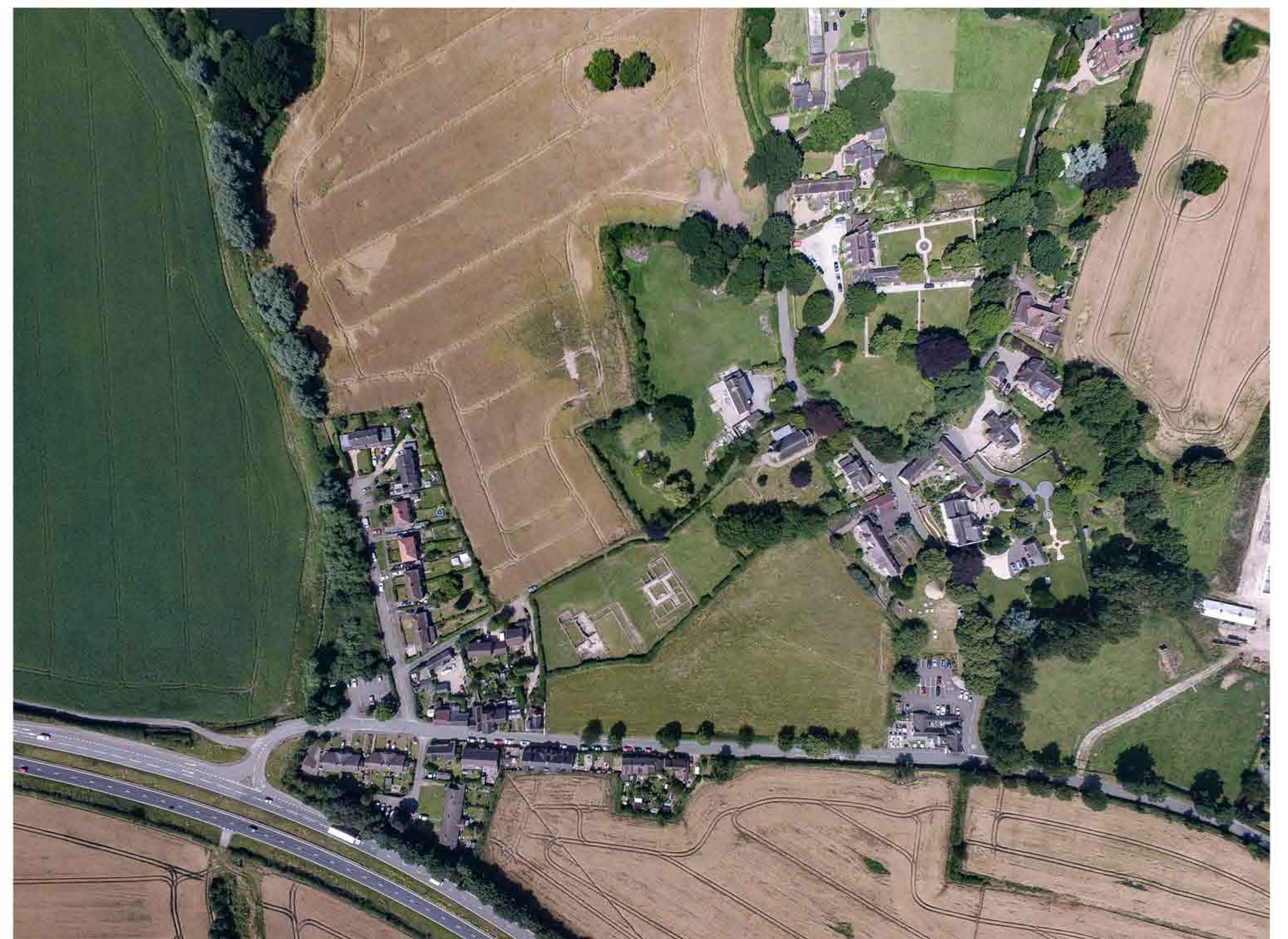
Drone, 14.9.16. 1200 ft, 366 m



Drone 4.12.16. 1200 ft, 366 m



Drone, 25.5.17. 1200 ft, 366 m



Drone 17.7.17. 1200 ft, 366 m

Print: portrait (up to A0)